



# STRUCTURAL TIMBER

The latest in structural timber building design and technologies

[STRUCTURALTIMBERMAGAZINE.CO.UK](http://STRUCTURALTIMBERMAGAZINE.CO.UK)



## Media Info

## CONTACTS

Consultant Editor

### Gary Ramsay



**AS TIMBER CONTINUES TO PROVE ITSELF TO BE AN ADAPTABLE, AESTHETICALLY ATTRACTIVE AND STRUCTURALLY STRONG BUILDING MATERIAL, STRUCTURAL TIMBER MAGAZINE INVESTIGATES THE REASONS BEHIND ITS SUCCESS AND SHOWS ITS READERS WHY TIMBER IS AT THE HEART OF AN IMPROVED BUILT ENVIRONMENT, A GROWING ENERGY EFFICIENT ECONOMY AND CONTRIBUTOR TO OVERALL SUSTAINABLE BUSINESS.**

Gary Ramsay has been writing, editing, commissioning and managing B2B publications both print and online since 1998. He has worked on many titles covering the building and construction industry and has specialist knowledge of the timber and forest certification sectors, eco-construction, sustainability, self-build and offsite construction.

**T: 01743 290001**  
**E: gary.ramsay**  
**@structuraltimbermagazine.co.uk**

Advertising Sales

### Stuart Maunder



To find out how the Structural Timber Magazine can help your business raise its brand profile and keep the construction sector informed about the latest innovations, product design, technology, specifications, case studies etc. please feel free to contact Stuart Maunder to discuss your requirements.a

**T: 01743 290050**  
**E: stuart.maunder**  
**@radar-communications.co.uk**

## PRODUCTION

<b>Circulation</b>	Jodie Kendrick	<b>01743 290009</b>	info@structuraltimbermagazine.co.uk
<b>Production</b>	Catherine Bodley	<b>01743 290001</b>	design@structuraltimbermagazine.co.uk
<b>Accounts</b>	Debra Brooks	<b>01743 290001</b>	debra.brooks@structuraltimbermagazine.co.uk

## PUBLISHER

Radar Communications Ltd, 5 Darwin Court, Oxon Business Park, Shrewsbury, Shropshire. SY3 5AL

**T: 01743 290001 | [www.radar-communications.co.uk](http://www.radar-communications.co.uk)**

**RADAR**

**DISCLAIMER:** The content of Structural Timber Magazine does not necessarily reflect the views of the editor or publishers and are the views of its contributors and advertisers. The digital edition may include hyperlinks to third-party content, advertising or websites, provided for the sake of convenience and interest. The publishers accept no legal responsibility for loss arising from information in this publication and do not endorse any advertising or products available from external sources. No part of this publication may be reproduced or stored in a retrieval system without the written consent of the publishers. All rights reserved.

**FRONT COVER:** Images Courtesy of Arup (1), Metsä Wood (2), CCG & Stora Enso (3), Ruth Butler Architects (4), Bloomberg LLP (5).

**BACK COVER:** Images Courtesy of Booth King Partnership (1), Heyne Tillett Steel & Studio RHE (2), Eckersley O'Callaghan (3), STREIF UK (4), Innovare Systems (5), Sprunt Architects (6), dRMM (7), ZÜBLIN Timber (8), SAM (9)



**STRUCTURAL TIMBER MAGAZINE** is dedicated to covering the UK's leading mainstream low-carbon construction material and its positive impact on the built environment. The publication is produced collaboratively with the Structural Timber Association (STA) - the UK's leading timber organisation - representing a broad range of UK businesses embracing timber technology and timber building systems.



Find latest news and features online at: [www.structuraltimbermagazine.co.uk](http://www.structuraltimbermagazine.co.uk)

Every issue will contain the latest news, industry comment, interviews and feature material, covering solid wood systems such as CLT and glulam, timber frame and SIPs, plus a wide range of product and technical issues surrounding specification, building design and performance.

Special reports on timber and its usage across the UK's building footprint will contain housing, education, healthcare and the retail/commercial sectors. Structural Timber Magazine will include feature articles and opinion from leading timber and construction industry decision makers and thought leaders alongside exemplar case studies and features on award-winning projects from the Structural Timber Awards - the UK's largest event dedicated to timber technology.

For more details on the awards visit: [www.structuraltimberawards.co.uk](http://www.structuraltimberawards.co.uk)

# CIRCULATION

Circulation of

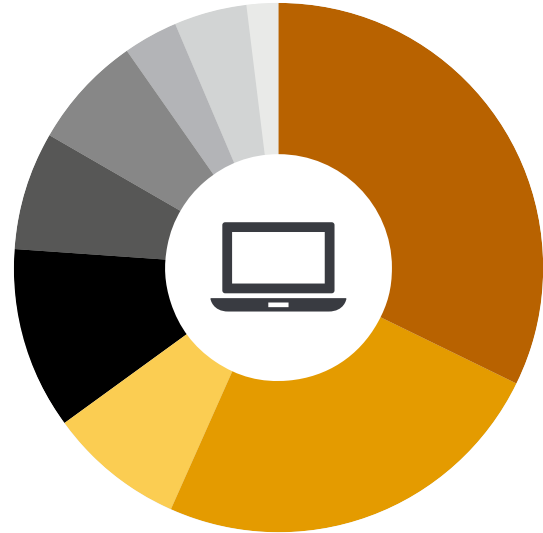
**Print Total = 9,979**



3,355	Architects / Architectural Technicians Technologists
1,750	Main Contractors / Specialist Contractors
1,090	Timber Frame Manufacturers, Erectors / Carpenters & Joiners
1,169	Structural Engineers
950	Clients / Directors / Project Managers / Housing Associations / Local Authorities
702	Surveyors / QS
542	Procurement Managers / Buyers
421	Energy Assessors / Sustainability Consultants
0	Other

Circulation of

**Digital Total = 40,993**



13,221	Architects / Architectural Technicians Technologists
10,033	Main Contractors / Specialist Contractors
4,617	Clients / Directors / Project Managers
3,415	Structural Engineers
2,928	Surveyors / QS
2,842	Procurement Managers / Buyers
1,892	Timber Frame Manufacturers, Erectors / Carpenters & Joiners
1,336	Energy Assessors / Sustainability Consultants
709	Other

**Circulation of Print + Digital = 50,972**

**THE MAGAZINE IS MAILED IN PRINT TO 10,609 CLIENTS, ARCHITECTS, CONTRACTORS AND SPECIFIERS, AS WELL AS ALL THE STA MEMBER COMPANIES (TIMBER FRAME MANUFACTURERS / SIPS / ENGINEERED TIMBER/ MATERIAL SUPPLIERS/ CONSULTANTS AND ENGINEERS).**

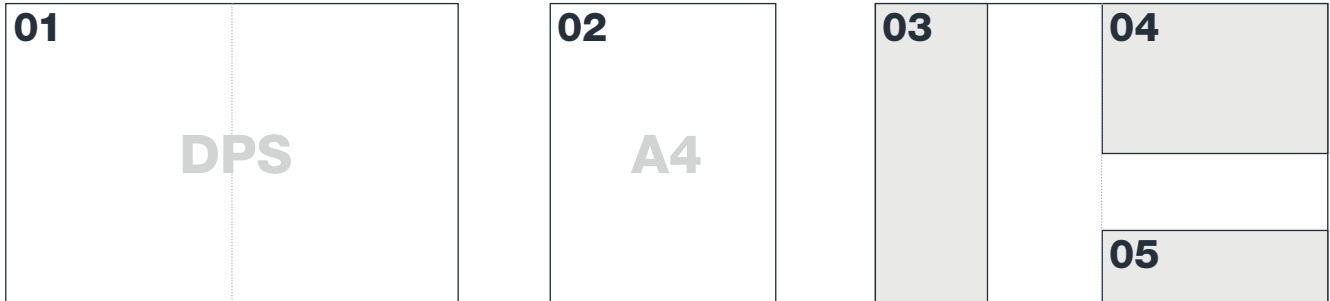
In addition, the magazine is published in a digital format and e-mailed to nearly 41,000 subscriber contacts. The circulation has been compiled from a number of qualified and audited sources including: The STA Information Centre Subscribers, Event Delegates (Regional Conferences, Timber Expo, Solid Wood Solutions, Explore Offsite Roadshows, Factory Tour Events) and STA dedicated research activity (database).

**Readers include:** Clients, Directors, Procurement Managers, Architects, Architectural Technicians & Technologists, Main Contractors/Specialist Contractors, Structural Engineers, Buyers, Project Managers, Surveyors, Quantity Surveyors, Energy Assessors and Sustainability Consultants.

**Across the following sectors:** Residential (Social Housing, Private Housing, Self-Build Housing), Local Authority, Education, Healthcare, Commercial – Retail, Hotels/Sport & Leisure.

Advertising

## Specifications



ADVERTISING	MECHANICAL SPECIFICATION	RATES
01. Double Page Spread	297mm (h) x 420mm (w) add 6mm bleed	£2475
02. Full Page A4	297mm (h) x 210mm (w) add 6mm bleed	£1375
03. 1/2 Page Vertical	267mm (h) x 93mm (w)	£ 715
04. 1/2 Page Horizontal	127mm (h) x 190mm (w)	£ 715
05. 1/4 Page Horizontal	57mm (h) x 190mm (w)	£ 385

SPECIAL POSITIONS	MECHANICAL SPECIFICATION	RATES
Front Cover Profile	Front cover image + contents page + DPS article	£3300
Lead Corporate Profile	DPS project image/advert + contents page + DPS article	£3300
Inside Front Cover	297mm (h) x 210mm (w) add 6mm bleed	£1595
Inside Back Cover	297mm (h) x 210mm (w) add 6mm bleed	£1595
Outside Back Cover	297mm (h) x 210mm (w) add 6mm bleed	£1980

ADVERTORIAL INSERTIONS	MECHANICAL SPECIFICATION	RATES
Classified Panels	120 words plus image	£ 150
Half page article	200 words & 2 images	£ 450
Full page article	450 words & 3 images	£ 900

**Feature articles and case studies:** limited availability and subject to Editor's approval. All editorial inclusions will appear in the News Section on the Structural Timber Magazine website. **Copy Requirements:** Please supply High Resolution CMYK PDF. Fonts embedded. Images 300dpi

### ONLINE ADVERTISING

If you are interested in banner advertising or e-newsletters and product & bulletins linked to the StructuralTimberMagazine.co.uk website then please contact **Stuart Maunder** on 01743 290002 or by email [stuart.maunder@radar-communications.co.uk](mailto:stuart.maunder@radar-communications.co.uk)

# FEATURES

2020

## Forward Features

**EVERY ISSUE WILL INCLUDE THE LATEST NEWS AND VIEWS FROM THE UK AND INTERNATIONAL TIMBER MARKET PLUS IN-DEPTH COVERAGE OF KEY TIMBER BUILDING SYSTEMS INCLUDING SOLID WOOD - CLT AND GLULAM - TIMBER FRAME, SIP TECHNOLOGY AND HYBRID SOLUTIONS.**

We will also report on a variety of issues surrounding the timber and construction sectors, ranging from the latest technical updates, Government legislation and industry guidance that are influencing the timber market. We will be running in-depth event previews, factory tour reports and announcements from key trade associations operating in the timber sector.

The magazine will cover the full gamut of complementary building products that are designed to improve timber usage and performance to satisfy the busy specifiers and end-user's every need.

**Send us your timber-related news, case studies and feature material:**  
[submissions@structuraltimbermagazine.co.uk](mailto:submissions@structuraltimbermagazine.co.uk)

### **PUBLICATION DATES AND COPY DEADLINES:**

**Winter 2020 - Issue 22 (futurebuild preview issue)**  
Copy Deadline: 24/01/20 Pub Date: 11/02/20

**Spring 2020 - Issue 23**  
Copy Deadline: 24/04/20 Pub Date: 12/05/20

**Summer 2020 - Issue 24 (Offsite Expo preview issue)**  
Copy Deadline: 28/08/20 Pub Date: 15/09/20

**Autumn 2020 - Issue 25 (Structural Timber Awards)**  
Copy Deadline: 23/10/20 Pub Date: 10/11/20

2020

## Regular Coverage

### NEWS & INDUSTRY UPDATES



All the latest UK and international developments from the timber sector including updates from key trade bodies including the BWF, CTI, STA, TTF, TRADA and Wood for Good plus people appointments, news-in brief and events calendar.

### FACTORY TOURS\*



Each issue will feature a special report and photo story showing how a particular company, product or system is playing an important role in timber technology growth and development. We will see where the latest investments are being made and which companies are expanding their product range offering. Packages start from just £3,450 + VAT

**\* If you would like to be involved with our factory tour profile schedule, email:**  
[submissions@structuraltimbermagazine.co.uk](mailto:submissions@structuraltimbermagazine.co.uk)

### TIMBER SYSTEMS



A range of features, interviews and opinion pieces on solid wood, timber frame, structural insulated panels (SIPS) volumetric modules and hybrid solutions and the ways in which they are being used across an increasingly diverse building footprint plus a range of detailed supporting case studies and project profiles.

### ROUND-TABLE EVENTS



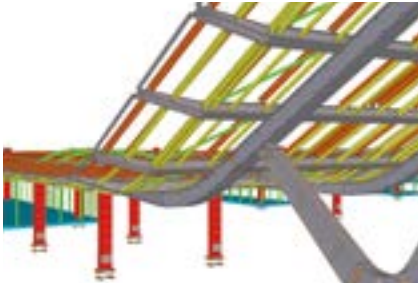
Choose a round-table debate event and host thought leaders and influencers from the timber sector, government departments, private sector clients, leading architects, engineers and contractors. Venue hire, refreshments, delegate recruitment and event management are included from just £4,950 +VAT. The discussion will be presented as a special feature in a future issue of the magazine and online.

**For hosting information, contact**  
Andrew Tansell on 01743 290002 or email:  
[andrew.tansell@structuraltimbermagazine.co.uk](mailto:andrew.tansell@structuraltimbermagazine.co.uk)

2020

## Regular Coverage

### TECHNOLOGY TALK



Each publication will feature a number of key engineering topics and industry bulletins examining an area of timber detailing with diagrams and expert commentary. This section will also include a wider analysis of sustainability, low carbon design, BIM, Fabric First and Passivhaus principles, fire protection, CE Marking and Building Control issues.

### SECTOR FOCUS



Housing (private, social and custom build), Education, Healthcare, Retail and Commercial/Leisure Sectors. Features, comment, opinion and supporting case studies on the best projects from exponents of timber technology in the UK and overseas.

### SKILLS & TRAINING



We will take in the latest news, views and guidance from industry specialists, including CITB, Edinburgh Napier University, CSIC TRADA, and Salford University plus institutions such as the UK Commission for Employment & Skills.

### EVENTS & CPD'S



Previews of important trade events including: Explore Offsite, futurebuild, CIH, Solid Wood Solutions, Timber Expo and Offsite Expo, plus a profile of industry CPD providers.\*

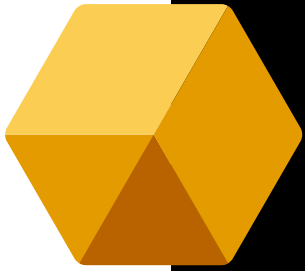
**\* If you would like to profile your latest CPD presentation please email:**  
[info@structuraltimbermagazine.co.uk](mailto:info@structuraltimbermagazine.co.uk)

### PRODUCTS & SYSTEMS

Each issue will cover a number of innovative products and system reviews and supporting features including:

- **INSULATION**  
Thermal and acoustic efficiency
- **FIRE PROTECTION**  
Best practice, STA SiteSafe and policy updates
- **AIRTIGHTNESS**  
Membranes, tapes and seals
- **DOORS & WINDOWS**
- **PANEL PRODUCTS**  
OSB, plywood and MgO boards
- **BUILDING ENVELOPE**  
Cladding, façades and slip systems
- **GROUNDWORKS & FOUNDATION SYSTEMS**
- **WOOD PROTECTION**  
Timber treatments & preservatives
- **FABRIC FIRST & PASSIVHAUS APPROACH**
- **MODIFIED WOOD**
- **ROOFING**
- **FLOORING**
- **DIGITAL DESIGN**  
shifting perception through DfMA, BIM, ICT, AR/VR
- **MACHINERY, TOOLS & FIXINGS**  
The newest hardware on the market
- **HEALTH & SAFETY, CDM REGULATIONS**
- **FAIR PAYMENTS, INSURANCE & WARRANTIES**

Find the latest news and features online at: [www.structuraltimbermagazine.co.uk](http://www.structuraltimbermagazine.co.uk)



# STRUCTURAL TIMBER

For the latest issue of **STRUCTURAL TIMBER MAGAZINE**, industry news or specialist technical information on structural timber visit:

**[STRUCTURALTIMBERMAGAZINE.CO.UK](http://STRUCTURALTIMBERMAGAZINE.CO.UK)**

